

# STRUCTURE & MANAGEMENT

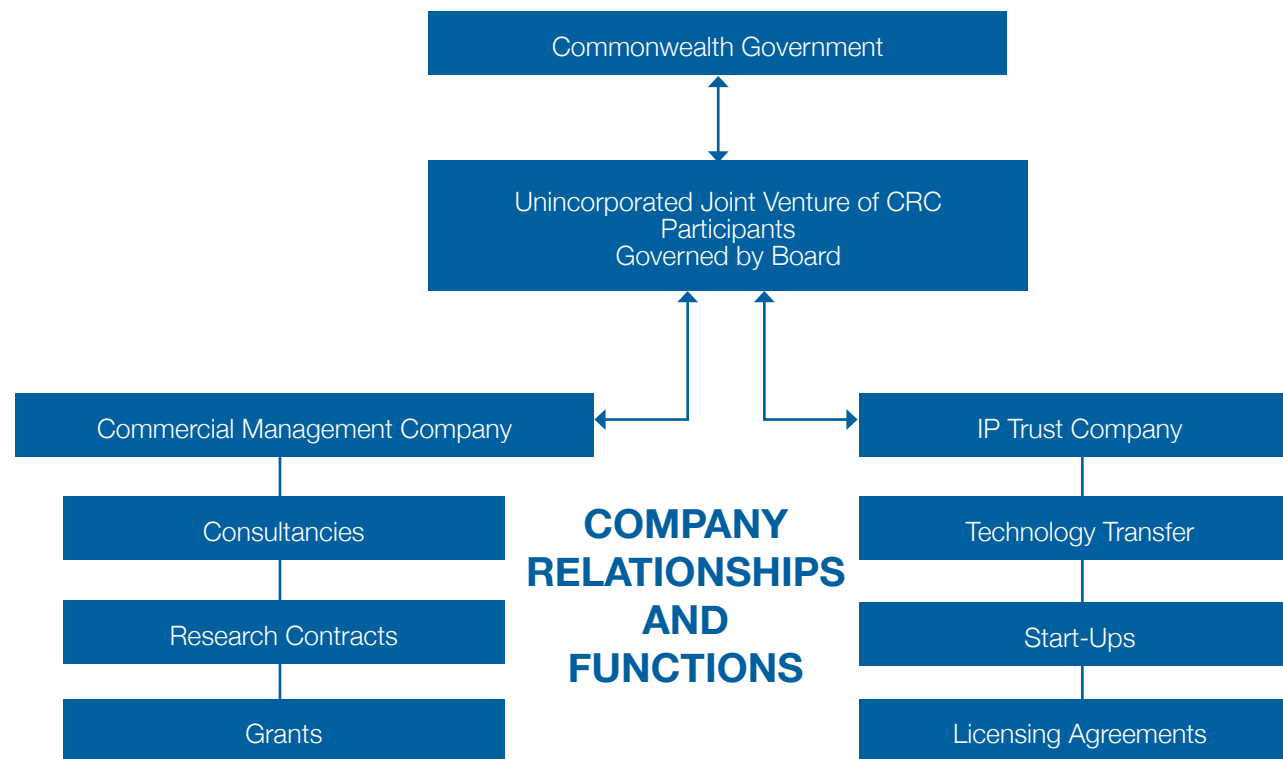
The management structure for this CRC is an unincorporated joint venture, supported by two companies with specific roles in IP and commercial management, under the direction of the governing Board.

The IP Trust Company holds legal title to the IP arising from CRC research, and can enter into agreements with other parties, including licenses for commercialisation.

The Commercial Management Company is the legal entity through which the CRC enters into agreements with third parties such as granting bodies and research contractors. This structure gives best resolve to the overall corporate governance of the CRC, allows appropriate involvement of industry participants in commercialisation of CRC outcomes, provides employment flexibility for participants and provides a single negotiating party for external contracts.



# STRUCTURE & MANAGEMENT CONTINUED



## RESEARCH & DEVELOPMENT PORTFOLIO

The Cooperative Research Centre for Sugar Industry Innovation through Biotechnology's (CRC SIIB's) current project portfolio is organised under four programs.

The programs are designed to create the most opportunities for our research to add significant commercial value to the Australian sugarcane industry.

They are:

### Enhanced sugarcane farming systems

- Environmental Sustainability
- Marker Development and Implementation

### New product development from sugarcane

- Sugarcane as a Plant Biofactory
- Value-adding Biorefineries

### Technology transfer (Commercialisation and Utilisation)

- Communication

### Education



### Program Leaders

Title and name	Role in CRC	Contributing organisation	Time allocation to CRC
Dr P H Twine	CEO	CRC	1.00
Prof L Nielsen	Program Leader	UQ	0.50
Dr J Manners	Program Leader	CSIRO	0.40
Dr P Schenk	Program Leader	UQ	0.40
Dr D Goosen	Commercialisation/Business Manager	CRC	1.00